

**Contact:**

info@suncotech.com

www.suncotech.com

+46 611 55 95 00

EXROLL® BELT CONVEYOR

Belt Conveyor for standing rolls

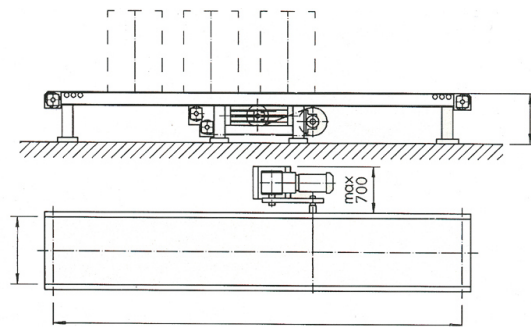
Exroll® is a line of products for transport and handling of paper rolls, ranging from individual components and machines to complete production lines.

The Belt Conveyor is equipped with a level belt, running on a large number of steel rolls in the upper part (C/C 100 mm) and some steel rolls for the return part. The tension device and the drive unit are combined. The conveyor's maximum load is 3 tons/meter.

Standard belt widths are 800, 1000 and 1200 mm. The design of the drive unit and tension device makes it possible to reverse the transport direction of the conveyor.

Technical information

- › Steel construction of welded beams, hollow square beams and round tubes.
- › Pivoted steel rolls for the upper part and the return part $d=70$ mm, 100 mm division. Adjustable fasteners for return part roll for belt control.
- › Drive drum with vulcanized rubber. End rolls, $d=200$ mm, with flange bearings and linear guided tension device.
- › Conveyor belt EP 400/3, driven by a helical geared motor with protected chain transmission.



Technical data

Installed motor power:	Normally 2.2–10 kW
Conveyor speed:	Normally 0.15–0.3 m/s